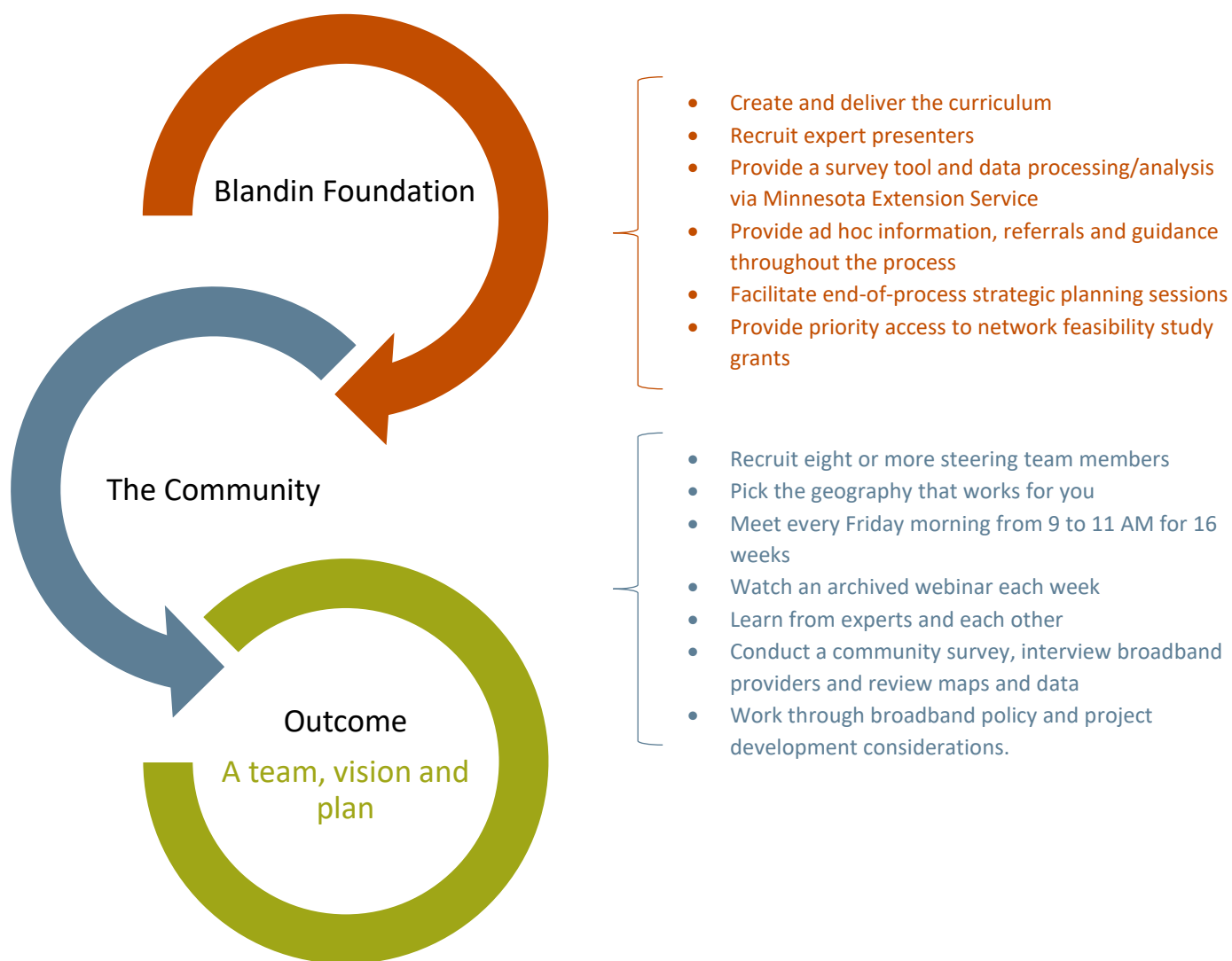


Community Broadband Resources: *Accelerate!*

A four-month process to spur community acquisition and deployment of federal and state broadband funds.



More details at broadband.blandinfoundation.org or email Mary Magnuson, Broadband Program Administrator, at memagnuson@blandinfoundation.org with questions.



Blandin Foundation™
STRENGTHENING RURAL MINNESOTA